

**SITE INFORMATION:**

**1.) OWNER:**  
 DAVID STARIRO  
 EQUITY PRESERVE, LLC  
 521 13TH STREET  
 SAINT CLOUD, FL 34769  
 (321)952-4725

**2.) SITE DATA FOR PHASE 2: (AS APPROVED BY COSC 5-22-14)**  
 ORIGINAL AREA: 82.72 acres  
 COUNTY RIGHT-OF-WAY (TAKE): 1.11 acres

TOTAL AREA PHASE 2: 81.61 acres  
 WETLAND (PRESERVE) UPLAND: 13.31 acres  
 BUFFER AREA (PRESERVED): 1.15 acres

NET DEVELOPED: 67.15 acres  
 TRACT 809A (DEDICATED TO COUNTY): 2.14 acres

TOTAL ON-SITE CONSTRUCTION AREA: 66.01 acres  
 RIGHT-OF-WAY AREA: 12.98 acres  
 RESIDENTIAL LOT AREAS: 39.93 acres  
 TOWNHOME LOT AREAS: 0 acres

LANDSCAPED AREAS: 0 acres  
 RECREATIONAL/PARK AREAS: 4.99 acres  
 POND P3 TRACT AREA: 4.77 acres

OPEN AREA: 2.37 acres  
 TOTAL LOTS (APPROVED): 244  
 NUMBER OF 50' LOTS: 244  
 NUMBER OF 70' LOTS: 24  
 NUMBER OF TOWNHOME LOTS: 0

3.) ADDITIONAL LOTS (PROPOSED): 18  
 NUMBER OF 70' LOTS: 18  
 REVISED TOTAL LOTS: 262

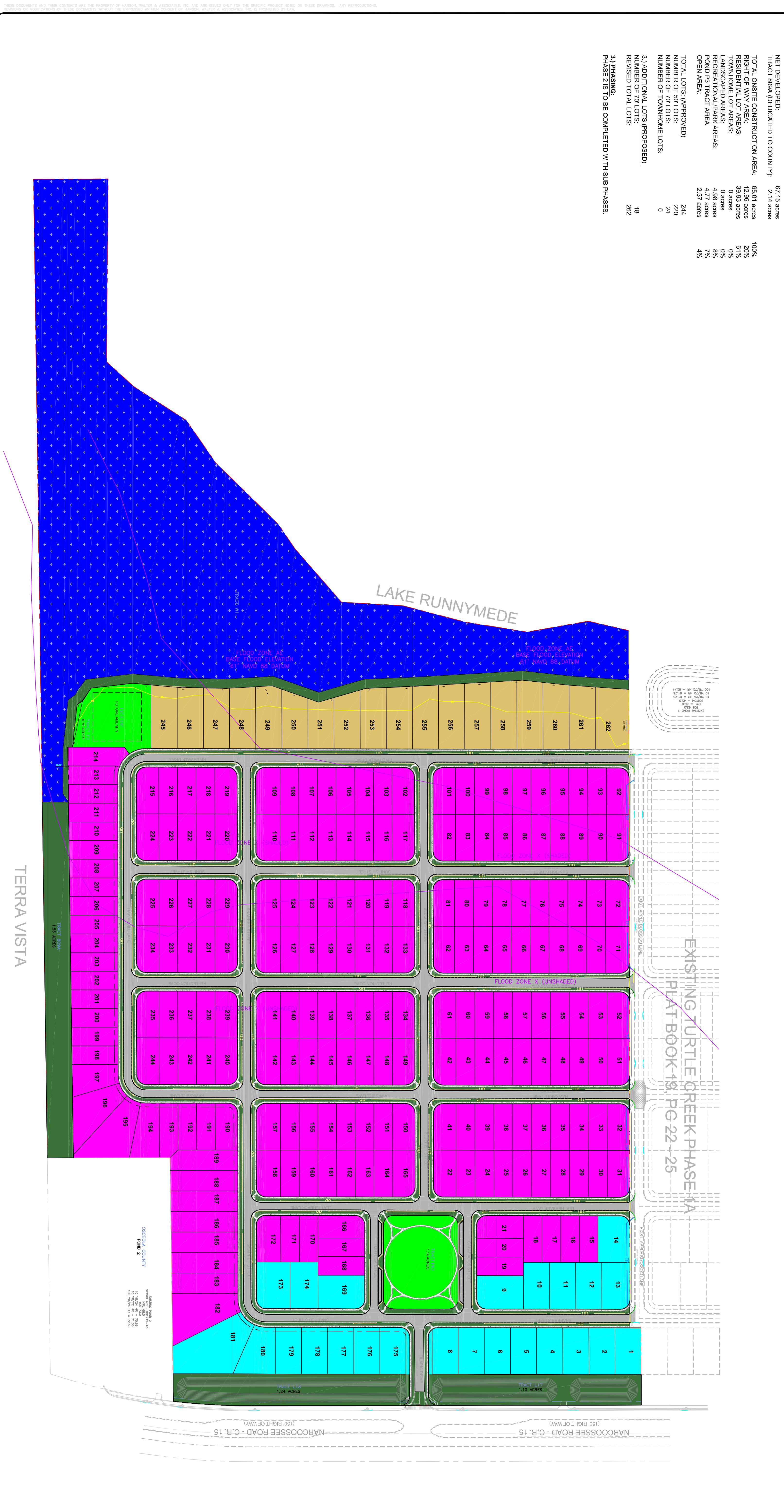
3.) PHASING:  
 PHASE 2 IS TO BE COMPLETED WITH SUB PHASES.

100%  
 20%  
 61%  
 0%  
 8%  
 7%  
 4%



**LEGEND**

- PROPOSED 70' LOTS
- PROPOSED 50' LOTS
- PROPOSED ADDITIONAL 70' LOTS
- PROPOSED RECREATION AREAS
- PROPOSED ROADWAYS
- PROPOSED CONSERVATION AREA
- PROPOSED OPEN AREA



DESIGN	SS	F.B. NO.	6
DRAWN	CZ	PAGE	26 S
CHECKED	AS SHOWN	SCALE	1" = 20'
CD# (see stamp)	DATE	12/2/14	BY

400 W. EMMETT STREET, KISSIMMEE, FLORIDA 34741-5481  
 ENGINEERING FAX: (321) 328-1045  
 ENG. CERT. OF AUTHOR. No. 3285/SUR. CERT. OF AUTHOR. No. 3270  
**HWA**  
 HANSON, WALTER & ASSOCIATES, INC.

**THE PRESERVE AT TURTLE CREEK**

\\4990-01\ENGINEERING\CADD\PLANS\Exhibit Drawings\4990-01 Color Presentation Plan REVISED 12-02-14.dwg \* Dec 09, 2014 - 5:59pm \* plotted by cztewo